

EUROLINE 'STYLE 'D' LST RADIATOR INSTALLATION INSTRUCTIONS
(COPPER ALUMINIUM HEAT EMITTER)

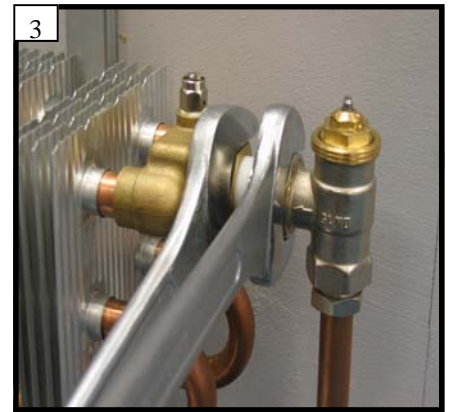
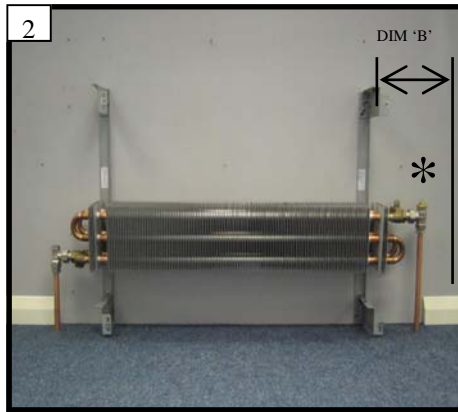
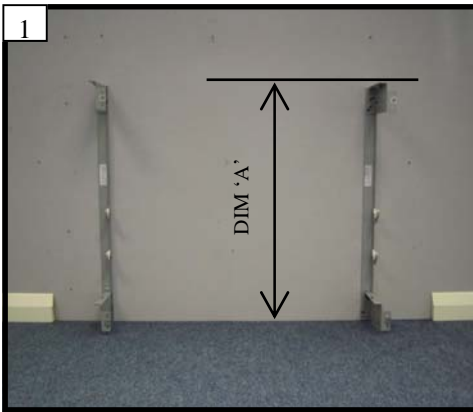


**AUTRON PRODUCTS LTD
17 SECOND AVENUE
BLUEBRIDGE INDUSTRIAL ESTATE
HALSTEAD
ESSEX
C09 2SU**

**TEL: 01787 473964
FAX: 01787 474061**

autron

EUROLINE STYLE 'D' COPPER ALUMINIUM LST INSTALLATION INSTRUCTIONS



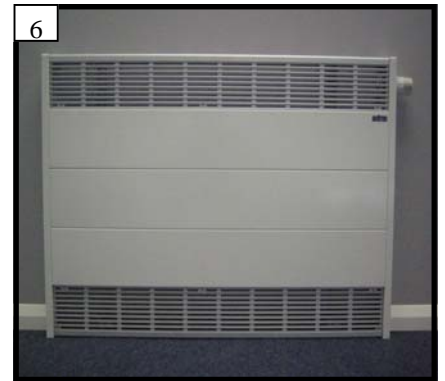
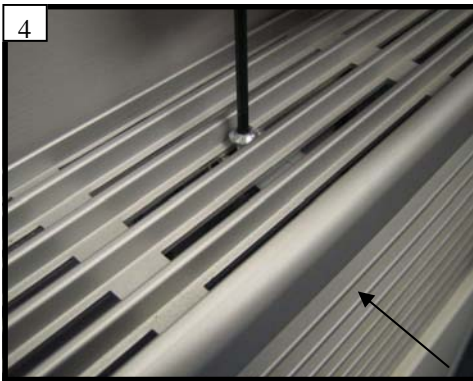
BRACKET FIXING HEIGHTS

MODEL	DIM 'A'
430D	420MM
580D	570MM
730D	720MM
880D	870MM
1030D	1020MM

EMITTERS ARE CONFIGURED T.B.O.E
 DIM. 'B' = 175MM AND SHOULD BE MEASURED FROM WHERE THE FLOW SIDE END CASE IS REQUIRED (*).

NOTE: THE FLOW SIDE OF THE EMITTER IS IDENTIFIED BY THE PLASTIC TAG. THE EMITTERS ARE UNIVERSAL AND CAN BE MOUNTED WITH THE FLOW EITHER SIDE. BRACKETS SHOULD BE MOUNTED ACCORDING TO THE ATTACHED SHEETS.

WITH ALL WALL BRACKETS SECURELY FIXED 'HANG' THE EMITTER ONTO THE WALL BRACKET HOOKS AND 'PLUMB-IN' ALL PIPEWORK ENSURING THAT THE EMITTER TAPPINGS ARE SUPPORTED WHEN TIGHTENING VALVE & FITTINGS.
 FILL EMITTER , FLUSH AND VENT. SEE WATER TREATMENT INSTRUCTIONS
PLEASE REFER TO THE ATTACHED INSTRUCTIONS TO FIT THE VALVE KIT SUPPLIED.



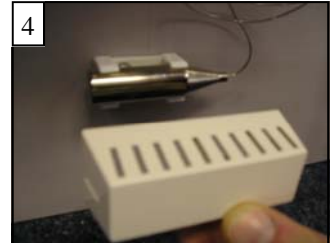
PLACE THE CASING ONTO THE WALL BRACKETS AND LINE UP THE FLOW SIDE END CASE WITH THE PENCIL MARK OR LINE. FIX TOP GRILLE AND TOP FRONT GRILLE TO BRACKET WITH M4 BUTTON HEAD SCREWS.

SECURE BOTTOM GRILLE.

CLEAN CASING WITH FURNITURE POLISH.

VALVE KIT INSTALLATION INSTRUCTIONS

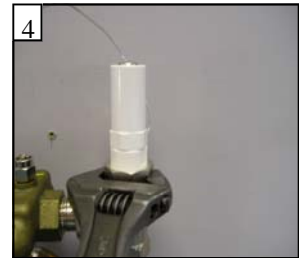
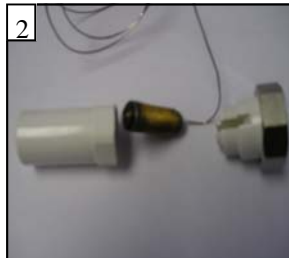
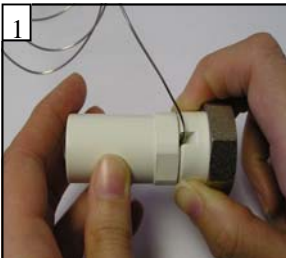
VK3 VALVE KIT (FOR USE WITH ALL RADIATORS)



FIT THE TRV HEAD TO THE TRV BODY.

FIX THE MOUNTING CLIP FOR THE REMOTE PHIAL TO THE WALL UNDERNEATH THE EMITTER AND DIRECTLY IN THE PATH OF THE INTAKE AIR FLOW, CLIP IN THE REMOTE PHIAL AND PLACE THE COVER OVER THE TOP.
NOTE:- MAKE SURE THAT THE CAPILLARY DOES NOT SIT ON TOP OF THE EMITTER OR TOUCH THE HOT PIPES AS THIS WILL PREVENT THE TRV FROM WORKING PROPERLY.

VK4 VALVE KIT (FOR USE WITH SOVEREIGN AND STERLING RADIATORS)



DISMANTLE THE CAPILLARY. THREAD THE CAPILLARY THROUGH THE VALVE ACCESS HOLE ON THE END PANEL OF THE CASING.

RE-ASSEMBLE THE CAPILLARY AND FIT TO THE TRV BODY, BEING CAREFUL NOT TO KINK OR BEND THE CAPILLARY.



REMOVE THE FRONT OF THE CASING ON THE TRV HEAD AND FIX THE HEAD TO THE END OF THE RADIATOR CASING USING M4 BUTTON HEAD SCREWS. REPLACE THE FRONT OF THE TRV HEAD CASING.
NOTE:- MAKE SURE THAT THE CAPILLARY DOES NOT SIT ON TOP OF THE EMITTER OR TOUCH THE HOT PIPES AS THIS WILL PREVENT THE TRV FROM WORKING PROPERLY.

FOR INSTRUCTIONS ON HOW TO ADJUST THE TRV'S PLEASE SEE THE OVENTROP LEAFLET.

VK5 VALVE KIT (FOR USE WITH SLENDERLINE & EUROLINE RADIATORS. FOR STERLING OPTION SEE BELOW)



1
FIT THE REMOTE TRANSMITTER TO THE VALVE BODY, TAKING CARE NOT TO KINK OR BEND THE CAPILLARY.



2
REMOVE THE M4 BUTTON HEAD SCREWS SECURING THE FORWARD FACING TOP GRILLE AND REMOVE WITH AN UPWARD 'HINGE' MOVEMENT.



3
FIT THE VALVE HEAD END OF THE REMOTE TRANSMITTER TO THE BRACKET, TAKING CARE NOT TO KINK OR BEND THE CAPILLARY.



4
FIT THE VALVE HEAD TO THE REMOTE TRANSMITTER.



5
REPLACE THE FORWARD FACING TOP GRILLE AND ENSURE THAT THE VALVE HEAD BRACKET IS ALSO FIXED THROUGH THE GRILLE.
NOTE:- MAKE SURE THAT THE CAPILLARY DOES NOT SIT ON TOP OF THE EMITTER OR TOUCH THE HOT PIPES AS THIS WILL PREVENT THE TRV FROM WORKING PROPERLY.

VK5 VALVE KIT INSTALLATION INSTRUCTIONS (FOR USE WITH A STERLING CASING).



1
FIT THE REMOTE TRANSMITTER TO THE VALVE BODY, TAKING CARE NOT TO KINK OR BEND THE CAPILLARY.

2
THE TRV HEAD WILL NEED TO BE FITTED BEFORE THE CASING IS PLACED AGAINST THE WALL. (THE FOLLOWING PICTURES ARE TAKEN FROM THE REAR ASPECT OF THE CASING).
REMOVE THE TOP GRILLE.



3
FIT THE VALVE HEAD END OF THE REMOTE TRANSMITTER TO THE BRACKET, TAKING CARE NOT TO KINK OR BEND THE CAPILLARY.



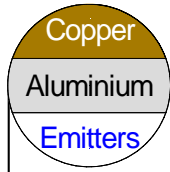
4
FIT THE VALVE HEAD TO THE REMOTE TRANSMITTER.



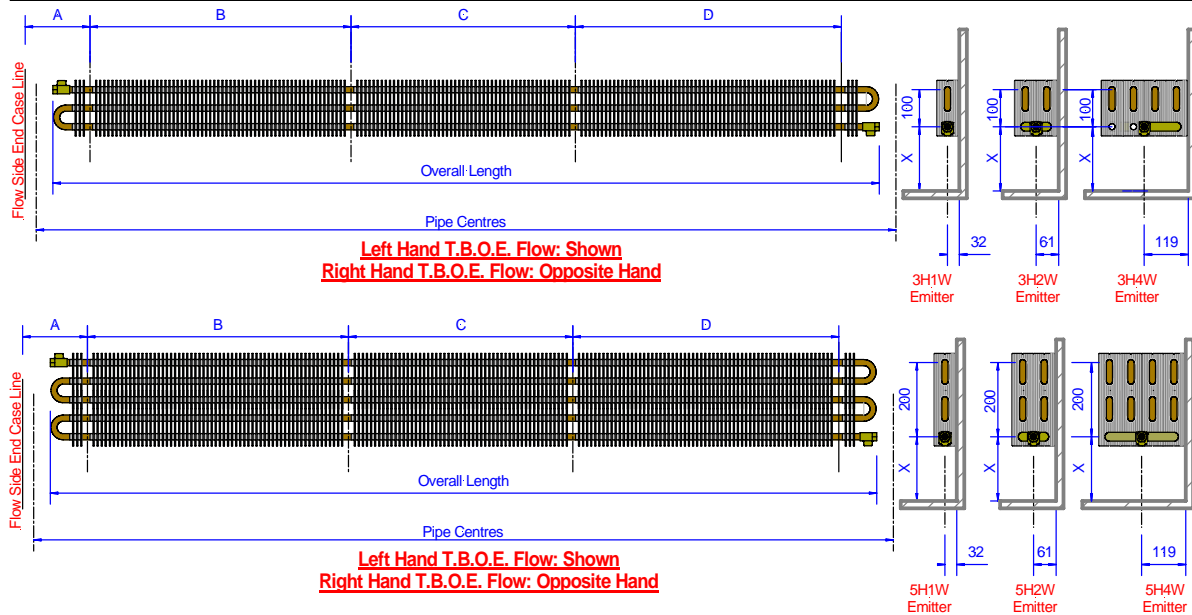
5
REPLACE THE TOP GRILLE.
NOTE:- MAKE SURE THAT THE CAPILLARY DOES NOT SIT ON TOP OF THE EMITTER OR TOUCH THE HOT PIPES AS THIS WILL PREVENT THE TRV FROM WORKING PROPERLY.

FOR INSTRUCTIONS ON HOW TO ADJUST THE TRV'S PLEASE SEE THE OVENTROP LEAFLET.

Copper Aluminium Heat Emitters



Bracket and Pipe Centre Positions



DIMENSION 'X' VARIES FOR EACH MODEL FROM 190MM TO 215MM APPROXIMATELY.

ALL 1 WIDE AND 2 WIDE MODEL EMITTERS HAVE 1/2" CONNECTIONS. ALL 4 WIDE MODEL EMITTERS HAVE 3/4" CONNECTIONS.

Case Length mm	Dim "A" mm	Dim "B" mm	Dim "C" mm	Dim "D" mm	Overall Length mm	Pipe Centres mm
661 / 663	175	300	n/a	n/a	502	592
763 / 765	175	405	n/a	n/a	607	697
865 / 867	175	510	n/a	n/a	712	802
968 / 970	175	610	n/a	n/a	812	902
1070 / 1072	175	710	n/a	n/a	912	1002
1172 / 1176	175	820	n/a	n/a	1022	1112
1274 / 1278	175	920	n/a	n/a	1122	1212
1377 / 1381	175	1020	n/a	n/a	1222	1312
1479 / 1483	175	1120	n/a	n/a	1322	1412
1581 / 1585	175	610	610	n/a	1422	1512
1684 / 1688	175	610	710	n/a	1522	1612
1786 / 1790	175	710	710	n/a	1622	1712
1888 / 1892	175	710	810	n/a	1722	1812
1990 / 1994	175	810	810	n/a	1822	1912
2092 / 2096	175	810	920	n/a	1932	2022
2195 / 2199	175	910	920	n/a	2037	2127
2297 / 2301	175	910	1020	n/a	2137	2227
2400 / 2404	175	710	610	710	2232	2322
2502 / 2506	175	710	710	710	2337	2427
2604 / 2608	175	710	810	710	2442	2532
2706 / 2710	175	810	710	810	2542	2632
2809 / 2813	175	810	810	810	2642	2732
2911 / 2915	175	810	920	815	2742	2832

Autron Euroline Style D LST Radiators Operating and Maintenance Instructions



Grille Removal

The Euroline Style D model features a Copper Aluminium Heat Emitter specifically designed for use within a Casing.

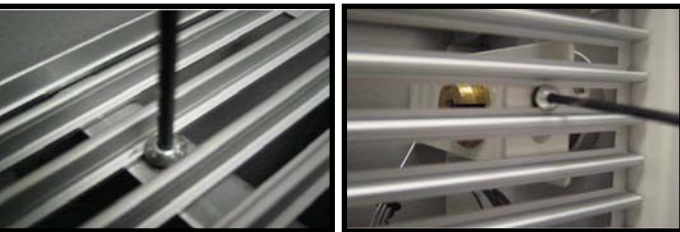
The Emitter will require occasional cleaning to remove dust. This can be achieved by use of a vacuum cleaner with hose attachment.

Frequent venting of the Emitter may be required, which is made possible after removing the Grille, using a standard air vent key on the 1/8" BSPT air vent.

On completion of the installation, the entire system must be thoroughly cleaned and flushed to remove debris/flux residues etc. If a chemical cleaner is used, it must be thoroughly flushed from the system.

Following this, the system must be dosed with a good eminence water treatment to prevent corrosion.

System design, flushing and dosing must be in accordance with BS 5449: 1990, BS EN 12828: 2003 and BS 7593: 1992



Using a 2.5mm Allen Key remove the M4 Button Head Screws which retains the Top and Top Front Grilles.

This will enable access to the Casing in order to vent the Emitter, and to vacuum the top of the Emitter.

Adjustment of the TRV can now be carried out.

For TRV adjustment see manufacturers leaflet.



Using the 2.5mm Allen Key provided, remove the M4 Flange Head Screws which retain the Bottom Grille. This will enable access to the Casing in order to vacuum beneath the Emitter.

Casing Removal

To remove the Casing after the top and Bottom Grilles have been removed, simply lift the Casing away from the Emitter. This operation would usually only be required if thorough washing of the Emitter was required.

General Cleaning

A general purpose furniture polish and soft cloth or duster will provide a good means of maintaining the Casing.

Notes on Valves: Hydrocarbons, including thread cutting oils/greases, will have an adverse effect on any EPDM components, such as valve seals, pump seals and flexible connections, in a pipework system. Therefore it is essential that pipework systems are thoroughly cleaned of any residues, and that the use of water treatments containing mineral oils is avoided.